



# Leistritz

## *Emarelle*<sup>™</sup> THE ELEGANT MACHINE-ROOM-LESS HYDRAULIC ELEVATOR

The *Emarelle*<sup>™</sup> is a Counterweight Roped Holeless elevator with a number of innovative features designed to meet the popular demand for MRL type installations. It has the same simplicity, ease of installation and service as a hydraulic elevator, however providing the ride quality equal to a traction MRL. With the use of a counterweight and a pulling cylinder with a 1:2 roping ratio, *Emarelle*<sup>™</sup> also offers significant advantages compared to conventional hydraulic designs. Space and energy savings, increased travel and speed, superb ride quality and absence of the conventional machine room is the trade mark of *Emarelle*<sup>™</sup>.



# *Emarelle*<sup>™</sup> **THE ELEGANT** **MACHINE-ROOM-LESS HYDRAULIC ELEVATOR**

## *Emarelle*<sup>™</sup> **BENEFITS**

### **Counterweight**

- Optimized to offset up to 2/3 of the empty car weight, which is reducing the motor size while saving substantially on energy and also limiting the heat generation. The result is less installed power and lower operating cost.

### **Pulling cylinder**

- The cylinder is in tension and not subject to buckling forces which reduces the cylinder diameter and oil volume (60% savings of active oil compared to conventional hydros).

### **Roping 1:2**

- Holeless design over the whole range of travel.
- Still a hydraulic design because all vertical loads to the hoistway overhead structure are eliminated.

### **Space saving power unit**

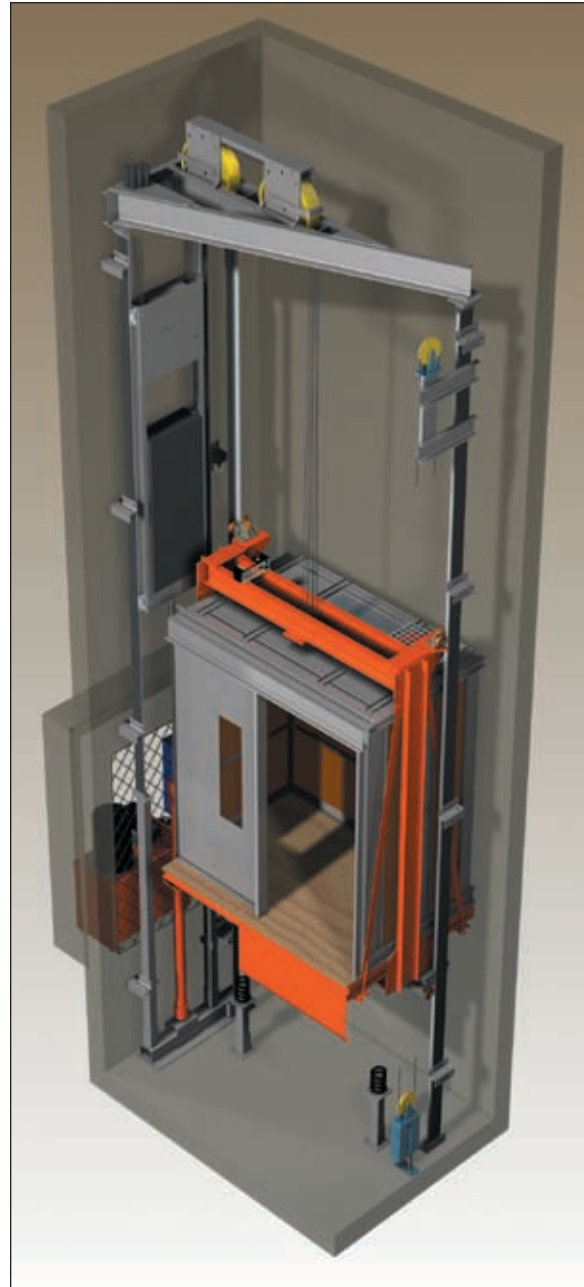
- Low oil volume and small motor size allowing space saving installations.
- Control valve is mounted on the top side of the power unit, giving easy access for service and emergency operations.

### **MRL (Machine-Room-Less)**

- Complies with the MRL requirements by eliminating the conventional machine room and allowing the power unit, controls and disconnects to be installed in a cabinet recessed into the hoistway wall adjacent at any floor.
- The power unit with accessories is designed as a compact unit which is enclosed behind fire rated doors easily accessible for service from the outside of the hoistway.

### **Complete package**

- Leistriz supplies complete equipment including cylinder, power unit, sling, platform, cab, entrances, door equipment, fixtures, controller, wiring and piping.



### **Application range**

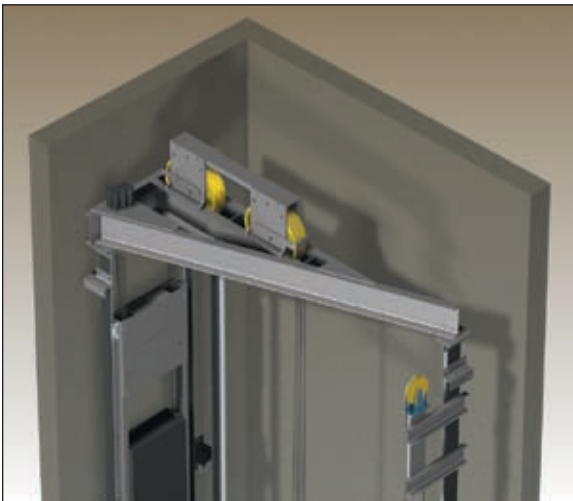
<b>Capacity, lbs</b>	2000 to 4000
<b>Speed, fpm</b>	125, 150, 200
<b>Travel, ft</b>	up to 125
<b>Opening</b>	F, F&R
<b>HP motor</b>	15 to 50

## *Emarelle*<sup>™</sup> **THE ELEGANT**

### **MACHINE-ROOM-LESS HYDRAULIC ELEVATOR**



It is very simple to install. With the help of the building hoist beam, the single piece overhead structure is hoisted up and attached to the top of the rails. It is easily fastened in place using standard hardware. This configuration does not require any additional structural support in the overhead and all the vertical reaction forces are brought down to the pit floor using the guide rails as columns.



To comply with the MRL design concept, the oil tank is designed very compact (3ft W x 1.5ft D x 2.5ft H) in such a way that it allows installation in a closet type space fully recessed into the hoistway wall at any floor. Power and control components (controller, switch disconnect) usually mounted in the machine room are placed near the power unit in the same space. Any heat generated is transferred into the hoistway by convection. The passenger safety in case of a main power outage is ensured by a battery lowering device built into the controller which automatically lowers the car to the egress floor.



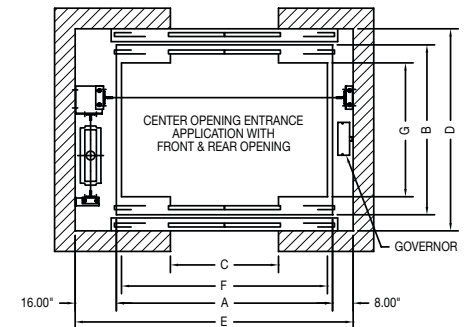
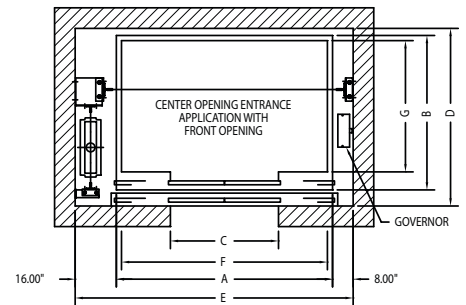
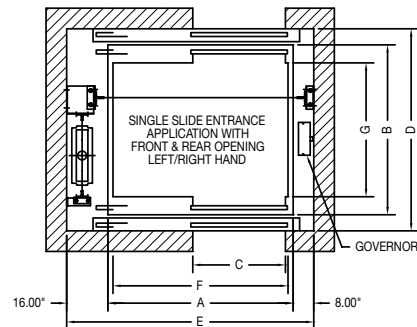
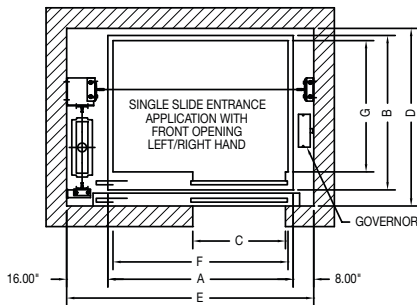
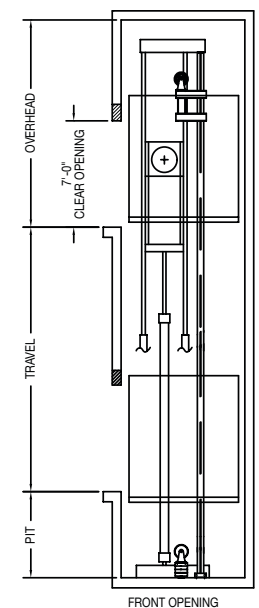
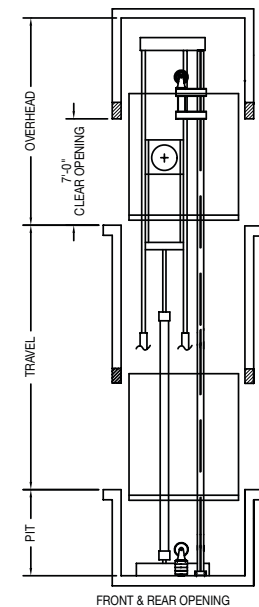
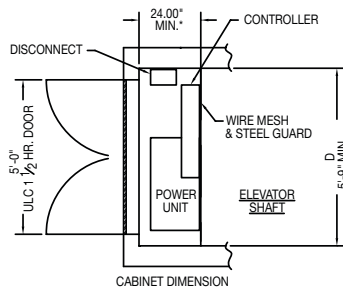
Leistritz offers a full line of complete, high-quality elevator packages for new installations as well as modernization to supplement worldwide well-known cylinders and state of the art components. Using standard equipment or custom design, Leistritz supplies cylinders, power unit and piping, sling and platform, rails and brackets, cab and entrances, door equipment, fixtures, and signals, controller and wiring, layouts for approval and detailed field installation manuals.

**Leistritz**

Contact us for information about our complete MRL Packages or for descriptions of other Leistritz systems. (201) 934-8262 • [www.leistritzcorp.com/elevators](http://www.leistritzcorp.com/elevators)

# Emarelle™ THE ELEGANT MACHINE-ROOM-LESS HYDRAULIC ELEVATOR

## Counterweight Roped at SIDE



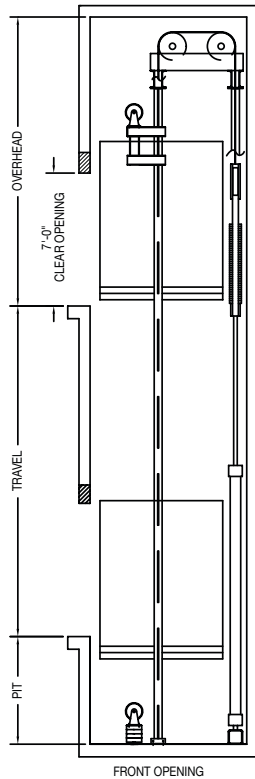
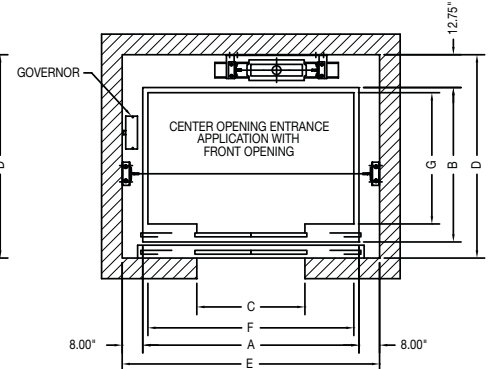
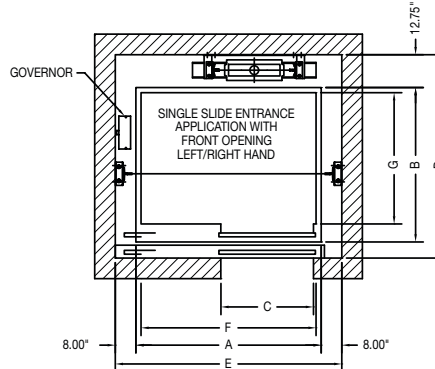
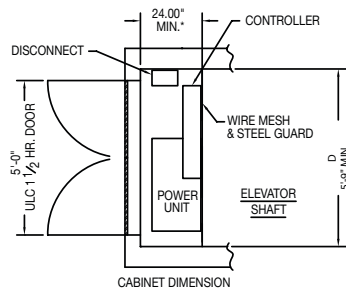
## Emarelle™ COUNTERWEIGHT ROPED HOLELESS PASSENGER

Type	Counterweight Roped (at SIDE) Front Opening / Front & Rear opening								
Service	Passenger								
Capacity	Clear Car Size W x D	Opening	A	B	C	D	E	Speed	HP*
2000 lb	5'-8" X 4'-3"	Front	6'-0"	5'-0"	3'-0"	5'-9"	8'-0"	125	15
			150	20					
		F & R	6'-0"	5'-6"	3'-0"	6'-6 1/2"	8'-0"	125	20
			150	25					
2500 lb	6'-8" X 4'-3"	Front	7'-0"	5'-0"	3'-6"	5'-9"	9'-0"	125	20
			150	25					
		F & R	7'-0"	5'-6"	3'-6"	6'-6 1/2"	9'-0"	150	25
			200	30					
3000 lb	6'-8" X 4'-9"	Front	7'-0"	5'-6"	3'-6"	6'-3"	9'-0"	125	20
			150	25					
		F & R	7'-0"	6'-0"	3'-6"	7'-0 1/2"	9'-0"	150	30
			200	40					
3500 lb	6'-8" X 5'-5"	Front	7'-0"	6'-2"	3'-6"	6'-11"	9'-0"	125	25
			150	30					
		F & R	7'-0"	6'-8"	3'-6"	7'-8 1/2"	9'-0"	150	30
			200	40					
4000 lb	7'-8" X 5'-5"	Front	8'-0"	6'-2"	4'-0"	6'-11"	10'-0"	125	30
			150	40					
		F & R	8'-0"	6'-8"	4'-0"	7'-8 1/2"	10'-0"	125	30
			150	40					
Pit	4'-0" Standard								
Overhead	14'-0" (8'-0" cab)								
Machine Room	Machine-Room-Less, Consult Leistritz Engineering for Layouts								
Entrance Type	Single slide (Left or Right) Center Opening (Not available for 2000 lb Capacity)								
Travel	Up to 125'-0", Consult Leistritz Engineering for your application								
Governor	Pit or Overhead mounted								

\*40hp motor may require 28" depending on travel, 50hp always requires 28"

# Emarelle™ THE ELEGANT MACHINE-ROOM-LESS HYDRAULIC ELEVATOR

## Counterweight Roped at BACK

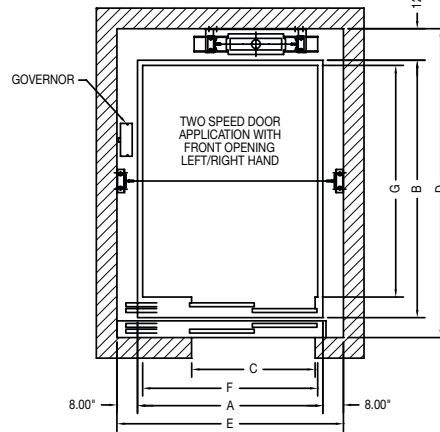
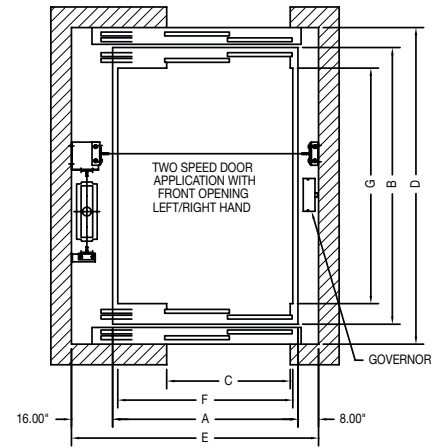
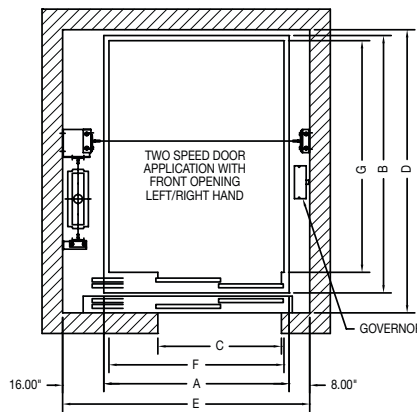
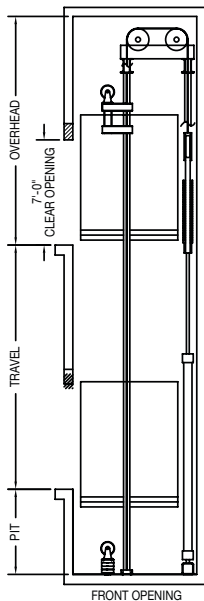
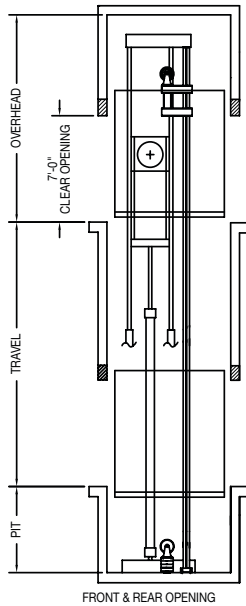
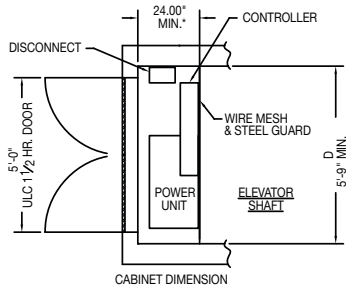


Emarelle™ COUNTERWEIGHT ROPED HOLELESS PASSENGER									
Type	Counterweight Roped (at BACK) Front Opening only								
Service	Passenger								
Capacity	Clear Car Size W x D	Opening	A	B	C	D	E	Speed	HP*
2000 lb	5'-8" X 4'-3"	Front	6'-0"	5'-0"	3'-0"	6'-7"	7'-4"	125	15
								150	20
								200	30
2500 lb	6'-8" X 4'-3"	Front	7'-0"	5'-0"	3'-6"	6'-7"	8'-4"	125	20
								150	25
								200	30
3000 lb	6'-8" X 4'-9"	Front	7'-0"	5'-6"	3'-6"	7'-1"	8'-4"	125	20
								150	25
								200	40
3500 lb	6'-8" X 5'-5"	Front	7'-0"	6'-2"	3'-6"	7'-9"	8'-4"	125	25
								150	30
								200	40
4000 lb	7'-8" X 5'-5"	Front	8'-0"	6'-2"	3'-0"	7'-9"	9'-4"	125	30
								150	40
								200	50
Pit	4'-0" Standard								
Overhead	15'-0" (8'-0" cab)								
Machine Room	Machine-Room-Less, Consult Leistritz Engineering for Layouts								
Entrance Type	Single slide (Left or Right)								
Travel	Center Opening (Not available for 2000 lb Capacity)								
Governor	Up to 125'-0", Consult Leistritz Engineering for your application								
	Pit or Overhead mounted								

\*40hp motor may require 28" depending on travel, 50hp always requires 28"

# Emarelle™ THE ELEGANT MACHINE-ROOM-LESS HYDRAULIC ELEVATOR

## Counterweight Roped at SIDE or BACK



Emarelle™ COUNTERWEIGHT ROPED HOLELESS PASSENGER/SERVICE									
Type	Counterweight Roped (at SIDE or BACK) Front Opening / Front & Rear opening								
Service	Passenger/Service								
Capacity	Clear Car Size W x D	Opening	A	B	C	D	E	Speed	HP*
4000 lb CWT at SIDE	5'-8" X 7'-6"	Front	6'-0"	8'-4"	4'-0"	9'-2"	8'-0"	125	30
			150	40					
		F & R	6'-0"	8'-11 1/2"	4'-0"	10'-3"	8'-0"	200	50
			125	30					
4000 lb CWT at BACK	5'-8" X 7'-6"	Front	6'-0"	8'-4"	4'-0"	10'-0"	7'-4"	150	40
			200	50					
		125	30						
Pit	5'-0" (4'-0" possible, Consult Leistritz Engineering)								
Overhead	15'-0" (14'-0" possible, Consult Leistritz Engineering)								
Machine Room	Machine-Room-Less, Consult Leistritz Engineering for Layouts								
Entrance Type	Two speed doors (Left, Right or Center)								
Travel	Up to 125'-0", Consult Leistritz Engineering for your application								
Governor	Pit or Overhead mounted								

\*40hp motor may require 28" depending on travel, 50hp always requires 28"

**Leistritz**

Contact us for information about our complete MRL Packages or for descriptions of other Leistritz systems. (201) 934-8262 • [www.leistritzcorp.com/elevators](http://www.leistritzcorp.com/elevators)