



# Leistritz

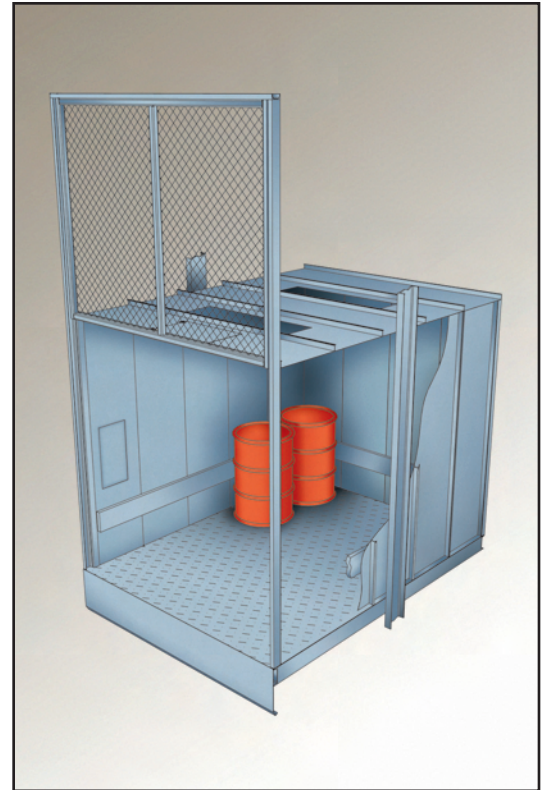
## HYDRAULIC FREIGHT ELEVATOR PACKAGES

Leistritz offers its customers a complete selection of freight elevators to meet a wide range of heavy-duty, freight handling applications. In addition to the cylinders, power units, platform and sling, Leistritz also supplies the cab, landing doors, car gates, fixtures, controller, wiring and piping – all the components needed for a complete freight elevator installation.

While tough construction, easy installation, and low maintenance are already our trademarks, there are many other reasons to select Leistritz:



- The flexibility of choice among in-ground or hole-less configurations, roped or direct acting, single or multistage assures cost effective applications at all times;
- High grade Leistritz cylinders with honed pistons provide well lubricated contact with seals, assuring long life and smooth ride quality;
- A choice of dry or submersible power unit motors;
- Custom designed platforms and slings tailor installations to the available elevator shaft. Pre-assembled sections enable easier, faster installations for significant savings;
- A broad selection of fixtures, signals and controller features is available;
- All components are consolidated by Leistritz into a single shipment for easier transportation and on-site delivery.



# HYDRAULIC FREIGHT ELEVATOR PACKAGES

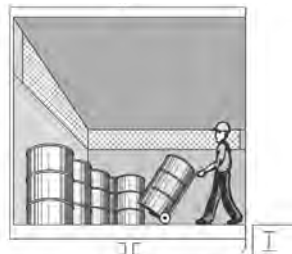
## The Leistritz complete freight package includes:

- Cylinders, power unit with control valve;
- Sling, platform, cab, trucking sill, car operating panel;
- Rails, rail brackets, buffers;
- Manual or power freight doors, car gates, interlocks and retiring cams;
- Entrance frames, fixtures;
- Controller with extended features, diagnostic tools and monitoring;
- Wiring, piping, couplings and valves;
- Ropes, governor and safeties for roped applications;
- Approval layouts, two field instruction manuals.

### GENERAL INFORMATION FOR FREIGHT ELEVATORS

CLASS "A", "B" & "C" LOADING (REFER TO A17.1)

#### CLASS "A"

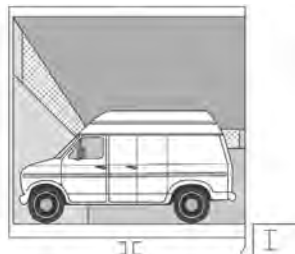


##### General Freight Loading

Where no item (including loaded truck) weighs more than 1/4 rated capacity.

Rating not less than  
50 lb/ft<sup>2</sup> (240 kg/m<sup>2</sup>)

#### CLASS "B"



##### Motor Vehicle Loading

(Automobiles, trucks, buses)

Rating not less than  
30 lb/ft<sup>2</sup> (145 kg/m<sup>2</sup>)

#### CLASS "C3"

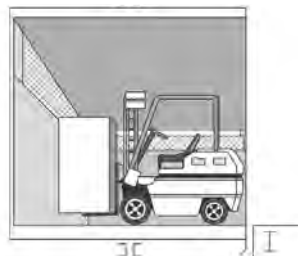


##### Concentrated Loading

(No truck used) but load increments are more than 1/4 rated capacity. Carried load must not exceed rated capacity.

Rating not less than  
50 lb/ft<sup>2</sup> (240 kg/m<sup>2</sup>)

#### CLASS "C1"



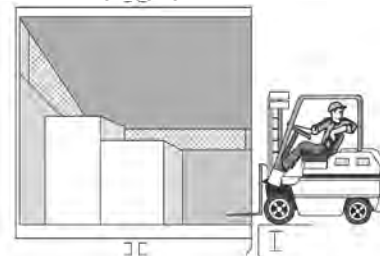
##### Industrial Truck Loading

Where truck is carried

Rating not less than  
50 lb/ft<sup>2</sup> (240 kg/m<sup>2</sup>)

This loading applies where concentrated load including truck is more than 1/4 rated capacity but carried load does not exceed rated capacity.

#### CLASS "C2"



##### Industrial Truck Loading

Where truck is not carried, but is used for loading and unloading

Rating not less than  
50 lb/ft<sup>2</sup> (240 kg/m<sup>2</sup>)

This loading applies where concentrated load including truck is more than 1/4 rated capacity but carried load does not exceed rated capacity. This loading also applies where increment loading is used, but maximum load on car platform during loading or unloading does not exceed 150% of rated load.

(Courtesy Building Transportation Standards and Guidelines, NEII-1 2000, © 2000, National Elevator Industry, Inc., Salem, NY)  
Reprinted from ASME Handbook A17.1-2000, by permission of The American Society of Mechanical Engineers. All rights reserved.

# LEISTRITZ...A TRADITION OF PERFORMANCE



Leistriz was founded more than a century ago in Nuernberg, Germany, and serves today as the headquarters for the company's worldwide operations.

Leistriz Corporation was established in 1985 as the company's center of operations in the Americas, responsible for marketing, warehousing, and servicing the company's broad selection of elevator hydraulics, pumps, and machine tools. With its parent company in Germany, Leistriz has always placed innovation and imagination at the forefront to achieve the highest levels of product excellence.

## ***The Right Solution for Any Hoistway***

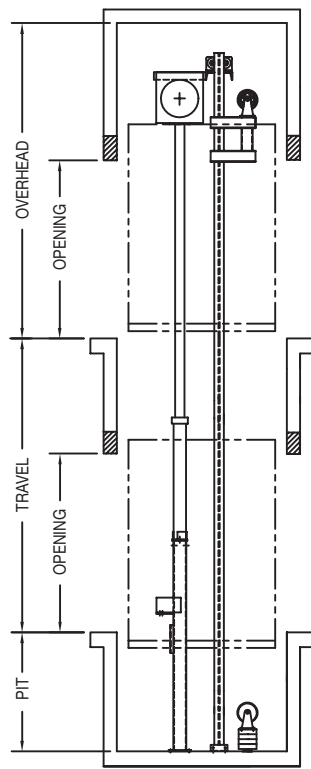
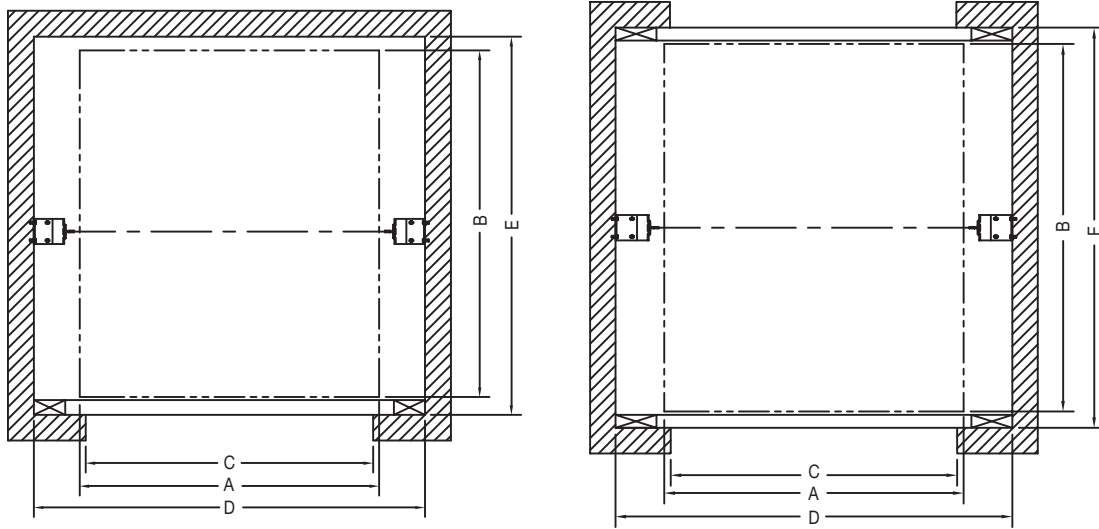
For the past 30 years, Leistriz has worked closely with its customers to develop hydraulic elevator systems that are specific to its customers' unique needs. This dedication has resulted in an extensive selection of systems and components, enabling the company to claim "the right solution for any hoistway."

Included among the Leistriz' passenger and freight elevator products are technologically advanced, innovative systems and components, including

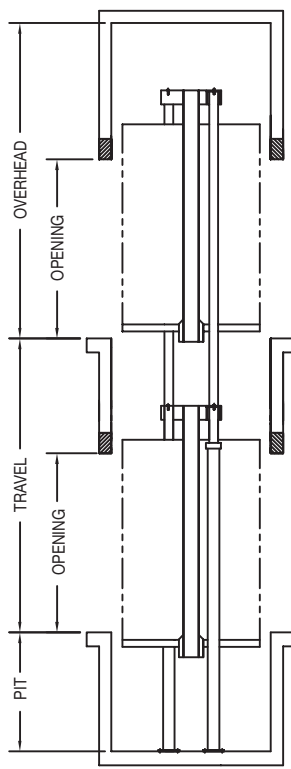
- Submersible or dry hydraulic power units with lift control valve up to 150 Hp
- Cantilevered car-sling packages up to 3500 lb duty load
- Twin-ram car-sling packages up to 15,000 lb duty load
- Machine-room-less counterweighted roped hydraulic systems up to 4,000 lb duty load
- Single-stage hydraulic cylinders with diameters up to 400 mm and 98 ft travel
- Multi-stage synchronized telescopic cylinders up to 200 mm and 98 ft travel
- Screw-pumps for elevator applications up to 259 gpm feed flow
- Plus custom designed systems to meet a full spectrum of requirements.

Combining our experience with close customer interaction, Leistriz hydraulic elevator products have become notable for ease and economy of installation and maintenance, long product life, rides that are smooth and safe, and compatibility with the most stringent environmental constraints.

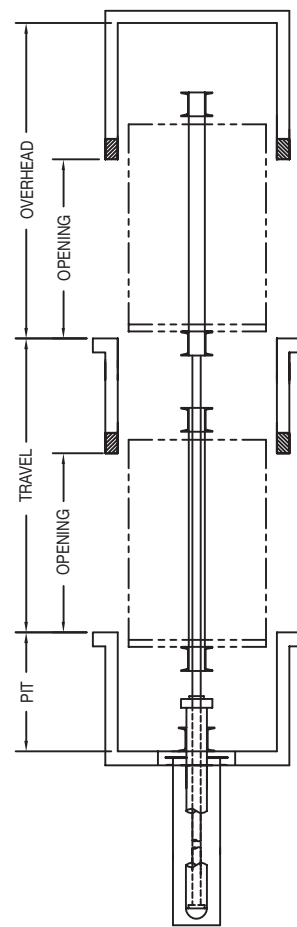
# HYDRAULIC FREIGHT ELEVATOR PACKAGES



DUAL ROPED



TWIN PISTON



BOREHOLE

**Please contact us or visit our website for an easy to complete quotation form.**

**Leistritz**

Leistritz Corporation, 165 Chestnut Street, Allendale, NJ 07401  
(201) 934-8262 • Fax: (201) 934-8266 • [www.leistritzcorp.com/elevators](http://www.leistritzcorp.com/elevators)

# HYDRAULIC FREIGHT ELEVATOR PACKAGES

<b>FREIGHT APPLICATION DUAL ROPED, TWIN PISTONS AND BOREHOLE</b>					
SPEED		50 FPM, 80 FPM, 100 FPM, 125 FPM, 150 FPM			
TRAVEL		MAXIMUM 98'-0"			
CAPACITY		5000 lb	6000 lb	8000 lb	10,000 lb
FRONT OPENING	CLEAR CAR SIZE WITH 6FT SINGLE SECTION CAR GATE (Width x Depth)	8'-2" x 9'-5 1/2"	8'-2" x 11'-5 1/2"	8'-2" x 11'-5 1/2"	10'-2" x 13'-5 1/2"
	CLEAR CAR SIZE WITH 6FT TWO SECTION CAR GATE (Width x Depth)	8'-2" x 9'-3 1/2"	8'-2" x 11'-3 1/2"	8'-2" x 11'-3 1/2"	10'-2" x 13'-3 1/2"
	A	8'-6"	8'-6"	8'-6"	10'-6"
	B	10'-0"	12'-0"	12'-0"	14'-0"
	C	8'-2"	8'-2"	8'-2"	10'-2"
	D	SPEED, TRAVEL AND CAPACITY DEPENDENT			
	E	WITH BIPARTING REGULAR TYPE	10'-8"	12'-8"	12'-8"
	WITH BIPARTING PASS TYPE	10'-9 3/4"	12'-9 3/4"	12'-9 3/4"	14'-9 3/4"
FRONT & REAR OPENING	CLEAR CAR SIZE WITH 6FT SINGLE SECTION CAR GATE (Width x Depth)	8'-2" x 9'-3"	8'-2" x 11'-3"	8'-2" x 11'-3"	10'-2" x 13'-3"
	CLEAR CAR SIZE WITH 6FT TWO SECTION CAR GATE (Width x Depth)	8'-2" x 8'-11"	8'-2" x 10'-11"	8'-2" x 10'-11"	10'-2" x 12'-11"
	A	8'-6"	8'-6"	8'-6"	10'-6"
	B	10'-0"	12'-0"	12'-0"	14'-0"
	C	8'-2"	8'-2"	8'-2"	10'-2"
	D	SPEED, TRAVEL AND CAPACITY DEPENDENT			
	E	WITH BIPARTING REGULAR TYPE	10'-10"	12'-10"	12'-10"
	WITH BIPARTING PASS TYPE	11'-1 1/2"	13'-1 1/2"	13'-1 1/2"	15'-1 1/2"
MACHINE ROOM		7'-6" x 7'-6" x 7'-6"			

Notes: Available capacity up to 100,000 lb. Consult Leistriz Engineering with questions.

Machine room may vary. Consult Leistriz Engineering with questions.

<b>MINIMUM SPACE REQUIREMENTS FOR STANDARD LANDING DOORS AND CAR GATES</b>				
OPENING HEIGHT	7'-0"	8'-0"	9'-0"	10'-0"
MINIMUM PIT	4'-0"	4'-6"	5'-0"	5'-6"
MINIMUM OVERHEAD	13'-1" + overtravel	14'-1" + overtravel	15'-1" + overtravel	16'-1" + overtravel
MINIMUM FLOOR TO FLOOR WITH BI-PARTING REGULAR	11'-0"	12'-6"	14'-0"	15'-6"
MINIMUM FLOOR TO FLOOR WITH BI-PARTING PASS TYPE	9'-0"	10'-0"	11'-0"	12'-0"

Note: Slide-up landing doors and car gates are available if minimum requirements cannot be met. Consult Leistriz Engineering with questions.

# HYDRAULIC FREIGHT ELEVATOR PACKAGES

<b>CAR LIFT APPLICATION</b>				
<b>BOREHOLE, DUAL ROPED AND TWIN PISTONS</b>				
SPEED		50 FPM, 80 FPM, 100 FPM, 125 FPM, 150 FPM		
TRAVEL		MAXIMUM 98'-0"		
CAPACITY		6000 lb	8000 lb	15000 lb
FRONT OPENING	CLEAR CAR SIZE WITH 6FT SINGLE SECTION CAR GATE (Width x Depth)	8'-0" X 19'-5 1/2"	9'-0" X 19'-5 1/2"	10'-0" X 23'-5 1/2"
	CLEAR CAR SIZE WITH 6FT TWO SECTION CAR GATE (Width x Depth)	8'-0" X 19'-3 1/2"	9'-0" X 19'-3 1/2"	10'-0" X 23'-3 1/2"
	A	8'-4"	9'-4"	10'-4"
	B	20'-0"	20'-0"	24'-0"
	C	8'-0"	9'-0"	10'-0"
	D	SPEED, TRAVEL AND CAPACITY DEPENDANT		
	E	W/BIPARTING REGULAR TYPE	20'-8"	20'-8"
	W/BIPARTING PASS TYPE	20'-9 3/4"	20'-9 3/4"	24'-9 3/4"
FRONT & REAR OPENING	CLEAR CAR SIZE WITH 6FT SINGLE SECTION CAR GATE (Width x Depth)	8'-0" X 19'-3"	8'-0" X 19'-3"	8'-0" X 23'-3"
	CLEAR CAR SIZE WITH 6FT TWO SECTION CAR GATE (Width x Depth)	8'-0" X 19'-0"	8'-0" X 19'-0"	8'-0" X 23'-0"
	A	8'-4"	9'-4"	10'-4"
	B	20'-0"	20'-0"	24'-0"
	C	8'-0"	9'-0"	10'-0"
	D	SPEED, TRAVEL AND CAPACITY DEPENDANT		
	E	W/BIPARTING REGULAR TYPE	20'-10"	20'-10"
	W/BIPARTING PASS TYPE	21'-1 1/2"	21'-1 1/2"	25'-1 1/2"
MACHINE ROOM		7'-6" X 7'-6" X 7'-6"		

Notes: Available capacity up to 100,000 lb. Consult Leistriz Engineering with questions.

Machine room may vary. Consult Leistriz Engineering with questions

<b>MINIMUM SPACE REQUIREMENTS FOR STANDARD LANDING DOORS AND CAR GATES</b>			
OPENING HEIGHT	7'-0"	8'-0"	9'-0"
MINIMUM PIT	4'-0"	4'-6"	5'-0"
MINIMUM OVERHEAD	13'-1" + OVERTRAVEL	14'-1" + OVERTRAVEL	15'-1" OVERTRAVEL
MINIMUM FLOOR TO FLOOR WITH BI-PARTING PASS TYPE	9'-0"	10'-0"	11'-0"
MINIMUM FLOOR TO FLOOR WITH BI-PARTING REGULAR	11'-0"	12'-6"	14'-0"

Note: Slide-up landing doors and car gates are available if minimum requirements can not be met. Consult Leistriz Engineering with questions.