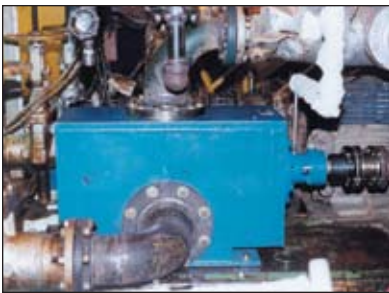


L 3 R E - E N G I N E E R E D P U M P



L3 re-engineered pumps replaced twin screw pumps in fuel oil injection application



L3 re-engineered pumps replaced 3-screw pumps in crude oil charge application



L3 re-engineered pumps replaced twin screw pumps in asphalt flux and asphalt transfer applications



NOT REPAIRED...NEW!

LEISTRITZ L3 RE-ENGINEERED PUMPS

ALL NEW...FULLY WARRANTED...AND SOMETIMES LESS THAN THE PRICE OF A REPAIR



It's not hard to tell when a pump fails. Leistriz L3 Re-engineered pumps put you back on line quickly and economically.

Why repair high maintenance or misapplied pumps when the Leistriz L3 Re-engineered pump gives you a drop-in replacement that may cost less than repairing the existing pump?

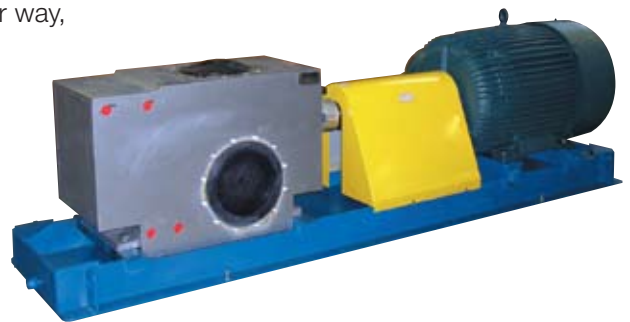
In many plants, older or inadequate pumps are a recurring problem that require constant attention. This means frequent downtime and lost production while back-up pumps are brought on line. It also means employing outside service contractors, or utilizing an already strained in-house maintenance crew and procuring expensive, long lead-time, replacement parts. Either way, ownership of older or overextended pumps is very costly.

In the past, installing a replacement pump may have required expensive piping modifications, driver relocation and/or baseplate modifications.

We have the solution!

The Leistriz Re-engineered pump utilizes our standard 3-screw pump cartridge with a fabricated casing to match your existing footprint and piping/driver connections. Our modern 3-screw technology assures reliable, efficient operation while pumping a broad range of fluids; including: asphalt, asphalt flux, asphaltenes, pitch, tar, lube oil, light and heavy fuel oil, residuals, vacuum bottoms, Olefins, process fluids, crude oil, kerosene or other lubricating fluids.

Then, if repair is needed, pull out one cartridge and slip in a new one. It's fast, trouble free and therefore, very economical.



HOW THE MONEY-SAVING LEISTRITZ SOLUTION WORKS.

Give us the dimensions and performance requirements of your existing twin screw, three screw, centrifugal, gear, piston or lobe pump. We will select the appropriate Leistriz pump cartridge, which is the entire pumping element. Then we'll insert this cartridge into a customized casing designed to match your existing mounting and piping configuration. The pump cartridge is fully performance tested and the casing is hydrostatically tested.



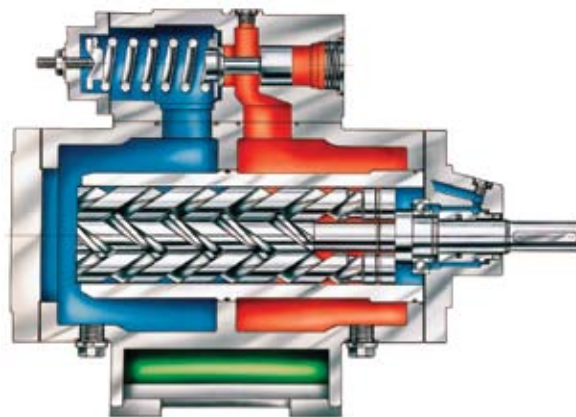
The result...an all-new direct drop-in Leistriz 3-screw pump that typically costs less than repairing the existing pump.

The advantages...

- An all new pump, fully tested and warranted, to replace your *present* one;
- Installation without hot work or electrical wiring issues (utilize existing baseplate and motor);
- Flow and pressure performance that match your current requirements;
- Greater efficiency with the use of more advanced pump design;
- Simpler maintenance, remove the installed cartridge and replace it with a spare cartridge;
- The cartridge is a standard off-the-shelf unit for simplicity and fast turn around;
- All together, much lower cost of ownership.

LEISTRITZ L3 CARTRIDGES – THE PICTURE OF QUALITY AND PERFORMANCE

- One-piece, nitrided, hardened and ground steel rotors;
- Single bearing (product, oil or grease lubricated);
- Single mechanical seal (located in low pressure chamber);
- Hydraulically balanced design means no thrust load;
- Durable, fabricated-steel casing, available with optional integral relief valve;
- Pulsation-free and low shearing design.



Performance Data:

Flow:	3-1,100 gpm
Diff. Pressure:	2,300 psi (max.)
Viscosity:	33-200,000 ssu
Temperature:	5-360°F

Typical Applications:

Batching
 Forwarding
 Transfer
 Loading
 Unloading/Boosting
 Bulk Handling
 Lubrication
 Injection
 Charge
 Re-circulation
 Igniter

SPECIFICATIONS:

Leistriz Pump Size	Differential Pressure (psi)	Speed (rpm)	Viscosity						Replaces Warren Pump Type	Replaces Sier-Bath Pump Type		
			500 SSU (106 cSt)		1000 SSU (215 cSt)		2300 SSU (500 cSt)					
			Flow (gpm)	Power (Hp)	Flow (gpm)	Power (Hp)	Flow (gpm)	Power (Hp)				
80/132	100	1750	172	14.8	173	16	174	18	J30	NEHP NE		
	200	1750	170	25	172	26	173	28				
	400	1750	168	45	170	46	172	48				
80/160	100	1750	208	17	209	19	211	21			J40	NHHP NH
	200	1750	206	30	208	31	210	34				
	400	1750	204	55	206	56	208	59				
100/172	100	1750	351	30	353	32	354	36	J50	NIHP NI		
	200	1750	348	50	351	53	353	57				
	400	1750	345	92	348	95	351	99				
100/200	100	1750	408	35	410	37	412	42			J60	NIJHP NH
	200	1750	405	59	408	62	411	67				
	400	1750	401	107	405	110	409	115				
125/210	100	1150	438	35	441	37	443	41	J30	NEHP NE		
	200	1150	434	61	438	63	442	68				
	400	1150	428	113	434	116	439	120				
125/250	100	1150	522	41	525	44	528	49			J40	NHHP NH
	200	1150	517	73	522	76	526	80				
	400	1150	509	135	516	138	522	143				
160/320	100	1150	1099	87	1105	94	1110	104	J50	NIHP NI		
	200	1150	1090	153	1099	159	1106	169				
	400	1150	1077	283	1090	290	1100	300				

Contact Leistriz for additional pump or cartridge data.

LEISTRITZ PUMPS AROUND THE WORLD

Leistriz began the manufacture of screw pumps more than 80 years ago, its first product being a unique, 2-rotor, design screw pump for fuel oil service.

Since then the screw pump family has expanded to 3-rotor, 5-rotor and 2-rotor liquid as well as multiphase pumps. Leistriz' engineered approach means our standard products are molded to the demands of the Chemical Processing, Marine, Oil and Gas, Refining, Power Generation and Machine Tool markets. And all Leistriz pumps are built to recognized quality standards (ISO 9001 Certified) and in compliance with API and ABS standards.

Leistriz engineers design and construct complete turnkey pumping packages, including pumps, motors, base plates, piping, valving, instrumentation, monitoring and control panels and other components needed for reliability, performance and economy.



Leistriz

165 Chestnut Street, Allendale, NJ 07401
Telephone: 201-934-8262 / Fax: 201-934-8266

www.leistrizcorp.com/pumps

© 2010

Printed in the U.S.A. 9/10-2M