



Leistritz

CANTILEVERED ROPED HOLELESS HYDRAULIC ELEVATOR PACKAGES

The Cantilevered Roped holeless elevator design from Leistritz eliminates the uncertainty of an in ground cylinder and the inconvenience of longer installation times and expense caused by drilling holes. The single stage hydraulic cylinder is completely above ground, where it can be easily inspected and maintained, and where it remains safe from oil leaks and corrosion.

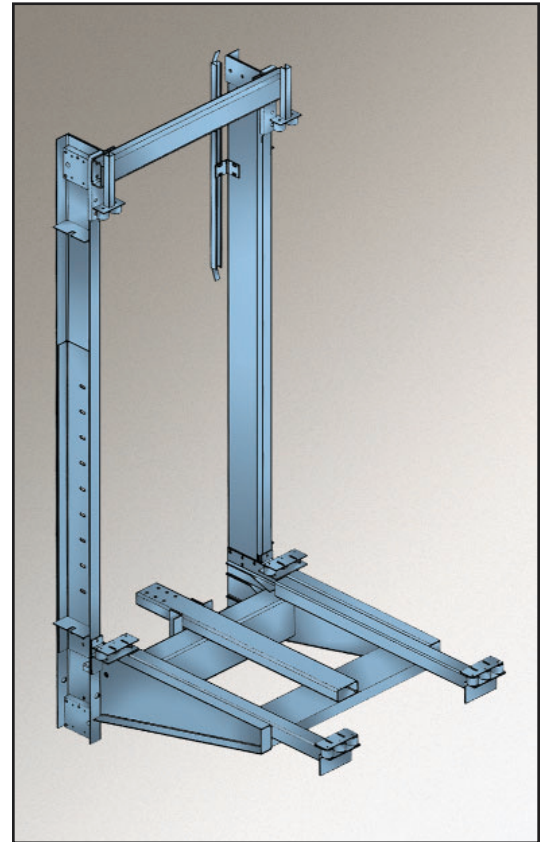
Each Leistritz Holeless Hydraulic Elevator Package contains:



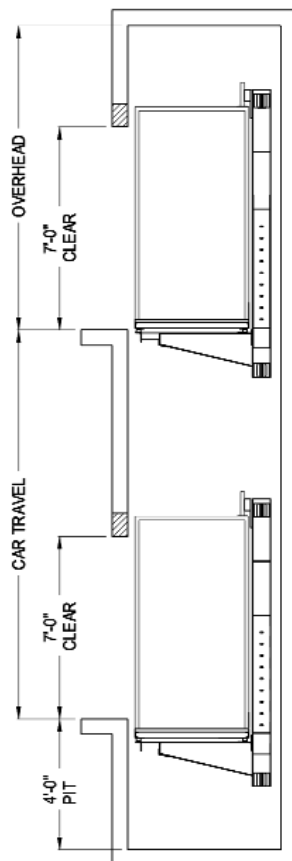
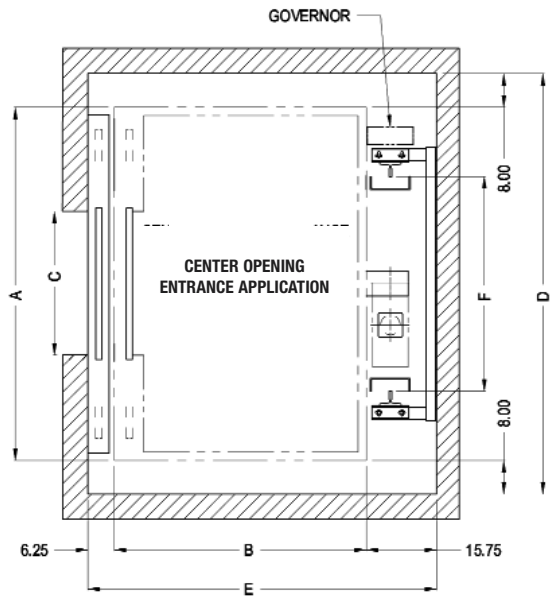
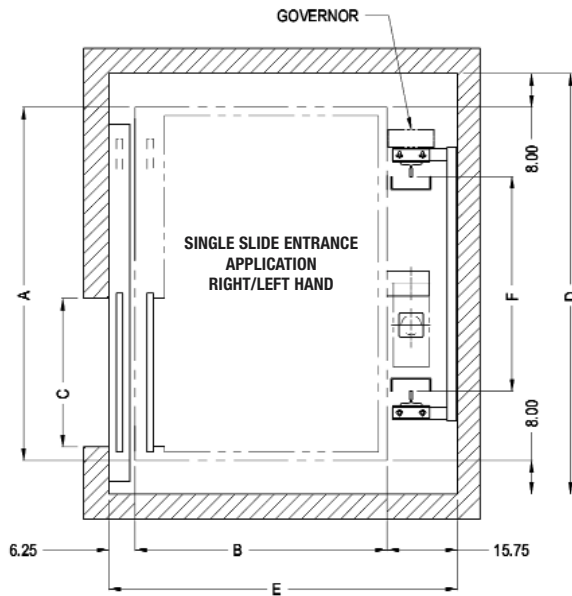
- Hydraulic cylinders with honed pistons;
- Submersible power unit incorporating a low pulsation screw pump, oversized submersible motor, and a muffler that eliminates the pulsation of pressurized oil for a smoother and quieter ride;
- Car sling package with guide rails, brackets, platform, toeguard, roller guides, progressive safeties, governor, rupture valves, buffers, limit switches, cam, and all necessary hardware;
- Manual of shop and field installation drawings.

Each component is manufactured to exacting quality standards, and rigorously inspected at Leistritz before shipment.

The Cantilevered Roped design can be used for car travels up to 98ft while maintaining standard overhead and pit dimensions. It is well suited for small to medium sized applications. Standard cantilevered roped configurations are described on the following pages.



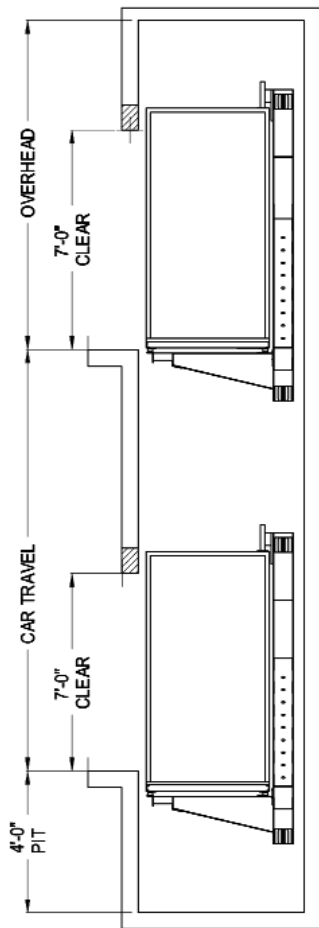
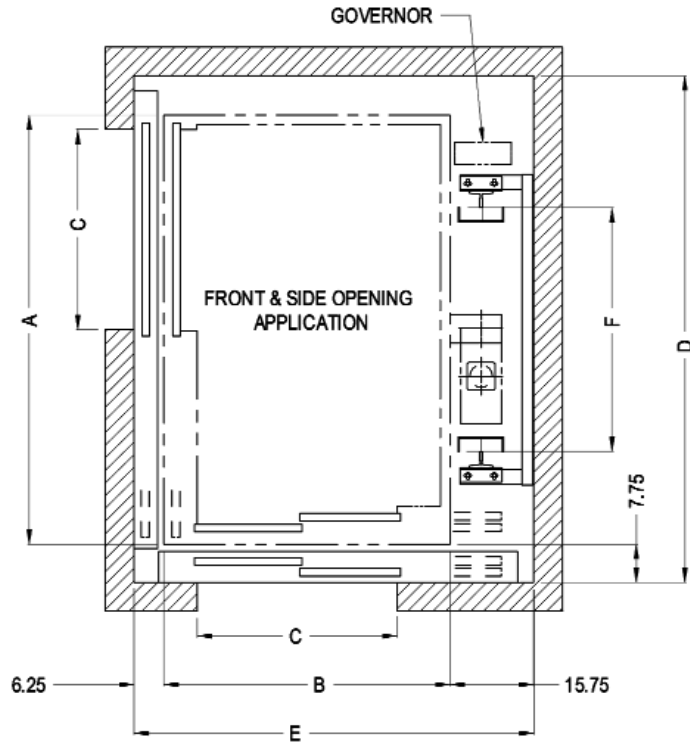
CANTILEVERED ROPED HOLELESS HYDRAULIC ELEVATOR PACKAGES



SPECIFICATIONS: CANTILEVERED ROPED HYDRO-PASSENGER

Type	Roped Hydro Front Opening Only			
Service	Passenger			
Speed	80 FPM, 100 FPM, 125 FPM, 150 FPM			
Capacity	2000 lb	2500 lb	3000 lb	3500 lb
Clear Car Size				
W x D	5'-8" x 4'-3"	6'-8" x 4'-3"	6'-8" x 4'-9"	6'-8" x 5'-5"
A	6'-0"	7'-0"	7'-0"	7'-0"
B	5'-0"	5'-0"	5'-6"	6'-2"
C	3'-0"	3'-6"	3'-6"	3'-6"
D	7'-4"	8'-4"	8'-4"	8'-4"
E	6'-10"	6'-10"	7'-4"	8'-0"
F	4'-3 1/8"	4'-3 1/8"	4'-3 1/8"	4'-3 1/8"
Pit	4'-0" Standard			
Overhead	12'-4" (8 FT CAB) 13'-4" (9 FT CAB)			
Machine Room	7'-0" x 5'-0" x 7'-6"			
Entrance Types	Machine room may vary. Consult Leistriz engineering with questions. Single Slide (Left or Right) Center Opening (Not available for 2000 lb Capacity)			
Travel	Maximum 98'-0"			
Governor	Pit or Overhead Mounted			

CANTILEVERED ROPED HOLELESS HYDRAULIC ELEVATOR PACKAGES



SPECIFICATIONS: CANTILEVERED ROPED HYDRO-PASSENGER

Type	Roped Hydro Front & Side Opening			
Service	Passenger			
Speed	80 FPM, 100 FPM, 125 FPM, 150 FPM			
Capacity	2000 lb	2500 lb	3000 lb	3500 lb
Clear Car Size				
Width x Depth	5'-8" x 4'-3"	6'-8" x 4'-3"	6'-8" x 4'-9"	6'-8" x 5'-5"
A	6'-6"	7'-6"	7'-6"	7'-6"
B	5'-0"	5'-0"	5'-6"	6'-2"
C	3'-0"	3'-6"	3'-6"	3'-6"
D	7'-8"	8'-8"	8'-8"	8'-8"
E	6'-10"	6'-10"	7'-4"	8'-0"
F	4'-3 1/8"	4'-3 1/8"	4'-3 1/8"	4'-3 1/8"
Pit	4'-0" Standard			
Overhead	12'-4" (8 FT CAB) 13'-4" (9 FT CAB)			
Machine Room	7'-0" x 5'-0" x 7'-6" Machine room may vary. Consult Leistritz engineering with questions.			
Entrance Types	Right/Left Hand			
Travel	Maximum 98'-0"			
Governor	Pit or Overhead Mounted			



Leistritz

*Leistritz Corporation, 165 Chestnut Street, Allendale, NJ 07401
(201) 934-8262 • Fax: (201)934-8266 • www.leistritzcorp.com*

© 2003

Printed in U.S.A.