



# Leistriz

## STANDARD HYDRAULIC ELEVATOR PACKAGES

The in-ground elevator design from Leistriz is suitable for all opening configurations – front, rear and side – using a cornerpost arrangement. The traditionally-designed cylinder is installed in the ground and attached under the car sling. It can be used with a single stage or telescopic cylinder.

*Each Leistriz STANDARD Hydraulic Elevator Package contains:*

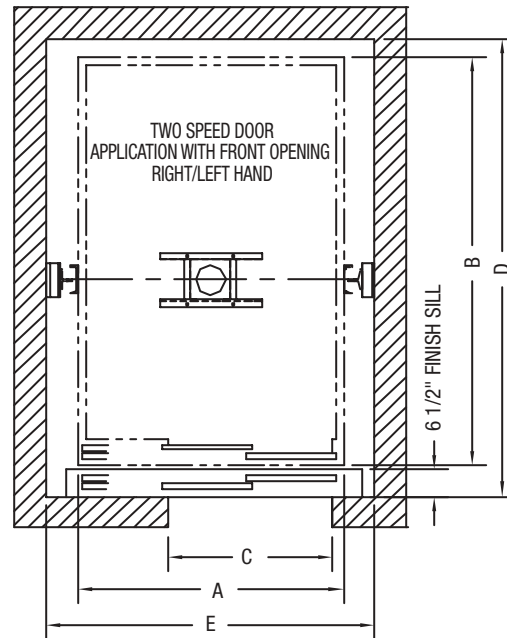
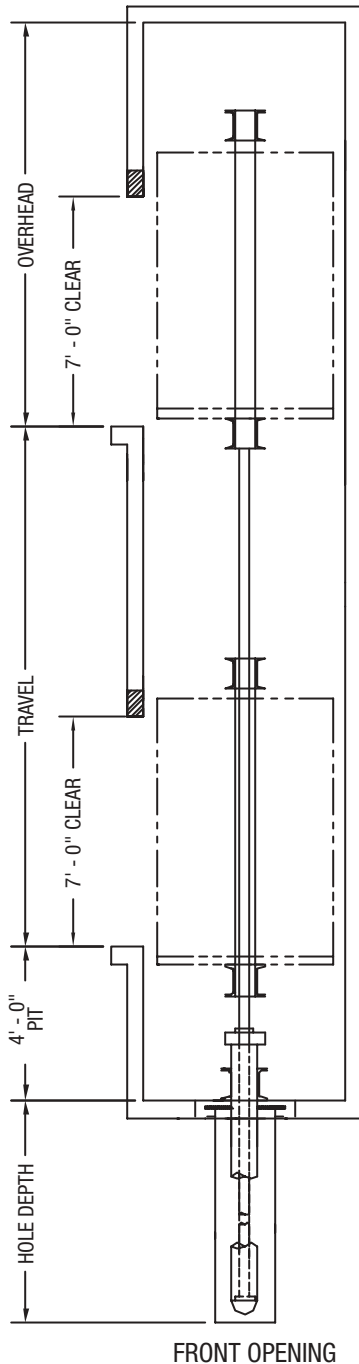


- Hydraulic cylinders with honed pistons;
- Submersible power unit incorporating a low pulsation screw pump, oversized submersible motor, and a muffler that eliminates the pulsation of pressurized oil for a smoother and quieter ride;
- Car sling package with guide rails, brackets, platform, toeguard, roller guides, buffers, limit switches, cam, and all necessary hardware;
- Manual of shop and field installation drawings.

Each component is manufactured to exacting quality standards, and rigorously inspected at Leistriz before shipment. This application can be used on Passenger, Service or Freight cars of any size. Standard in-ground configurations are described on the following pages.



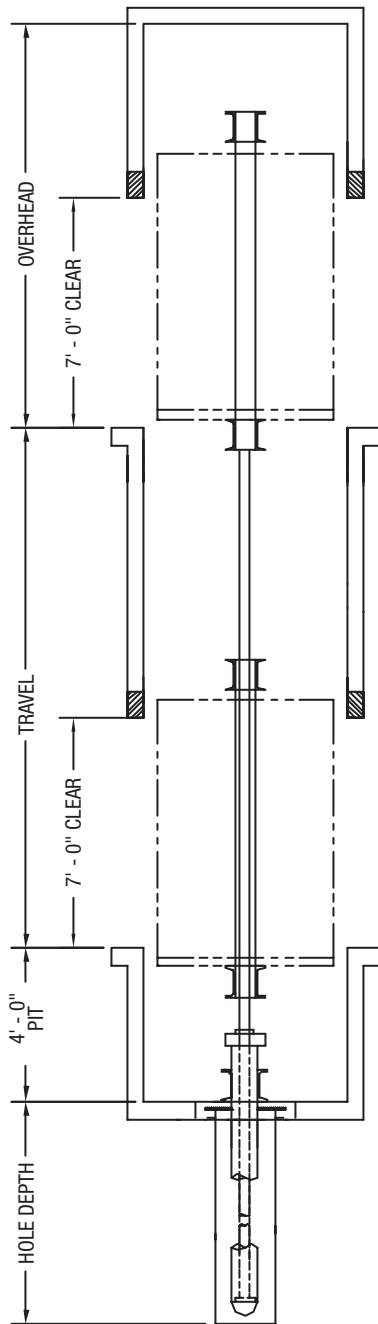
# STANDARD DIRECT / TELESCOPIC PASSENGER / SERVICE



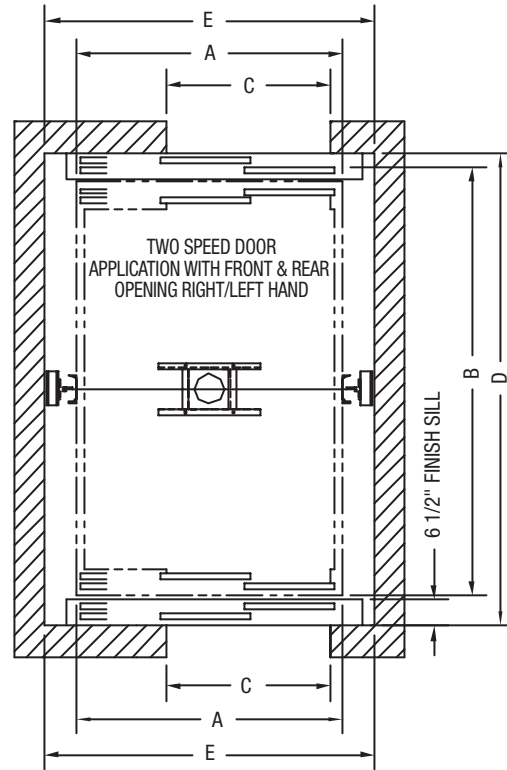
## SPECIFICATIONS: STANDARD DIRECT / TELESCOPIC PASSENGER / SERVICE

TYPE	STANDARD DIRECT / TELESCOPIC PASSENGER / SERVICE FRONT OPENING		
SERVICE	PASSENGER / SERVICE		
SPEED	80 FPM, 100 FPM, 125 FPM, 150 FPM		
CAPACITY	4000#	4500#	5000#
CLEAR CAR SIZE Width X Depth	5'-8" X 7'-6"	5'-8" X 8'-0"	5'-8" X 8'-8"
A	6'-0"	6'-0"	6'-0"
B	8'-4"	8'-10"	9'-4"
C	4'-0"	4'-0"	4'-0"
D	9'-2"	9'-8"	10'-2"
E	7'-4"	7'-4"	7'-4"
PIT	4'-0" STANDARD		
OVERHEAD	Speed dependant, consult Leistrizt engineering with questions.		
MACHINE ROOM	7'-0" X 5'-0" X 7'-6" Machine room may vary. Consult Leistrizt engineering with questions.		
ENTRANCE TYPES	TWO SPEED DOOR (LEFT OR RIGHT)		
TRAVEL	MAXIMUM 98'-0"		
HOLE DEPTH MIN.	DIRECT ACTING : TRAVEL + 1 FOOT TELESCOPIC 2 STAGES : TRAVEL/2 + 2 FEET TELESCOPIC 3 STAGES : TRAVEL/3 + 3 FEET		

# STANDARD DIRECT / TELESCOPIC PASSENGER / SERVICE



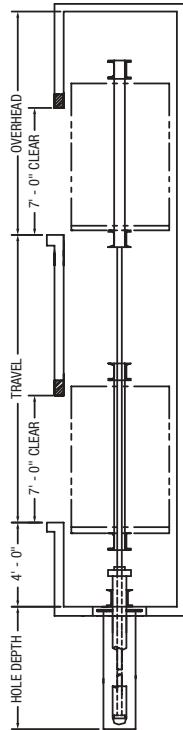
FRONT & REAR OPENING



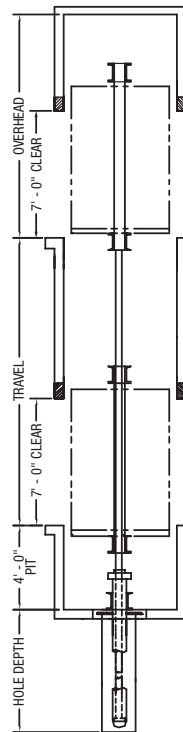
## SPECIFICATIONS: STANDARD DIRECT / TELESCOPIC PASSENGER / SERVICE

TYPE	STANDARD DIRECT / TELESCOPIC PASSENGER / SERVICE FRONT & REAR OPENING		
SERVICE	PASSENGER / SERVICE		
SPEED	80 FPM, 100 FPM, 125 FPM, 150 FPM		
CAPACITY	4000#	4500#	5000#
CLEAR CAR SIZE Width X Depth	5'-8" X 7'-6"	5'-8" X 8'-0"	5'-8" X 8'-8"
A	6'-0"	6'-0"	6'-0"
B	8'-11 1/2"	9'-5 1/2"	10'-1 1/2"
C	4'-0"	4'-0"	4'-0"
D	10'-3"	10'-9"	11'-5"
E	7'-4"	7'-4"	7'-4"
PIT	4'-0" STANDARD		
OVERHEAD	Speed dependant, consult Leistrizt engineering with questions.		
MACHINE ROOM	7'-0" X 5'-0" X 7'-6" Machine room may vary. Consult Leistrizt engineering with questions.		
ENTRANCE TYPES	TWO SPEED DOOR (LEFT OR RIGHT)		
TRAVEL	MAXIMUM 98'-0"		
HOLE DEPTH MIN.	DIRECT ACTING : TRAVEL + 1 FOOT TELESCOPIC 2 STAGES : TRAVEL/2 + 2 FEET TELESCOPIC 3 STAGES : TRAVEL/3 + 3 FEET		

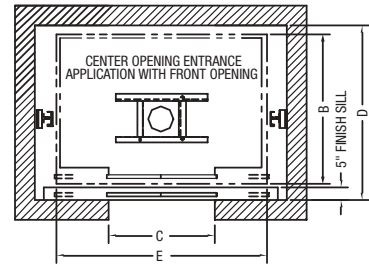
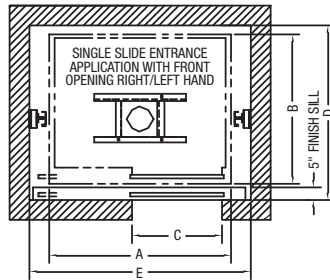
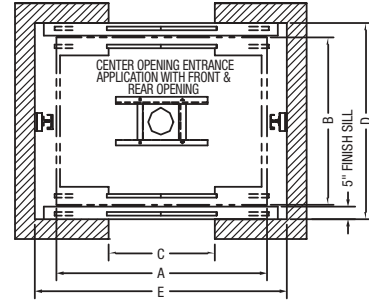
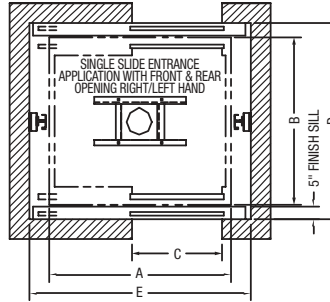
# STANDARD DIRECT / TELESCOPIC PASSENGER



FRONT OPENING



FRONT & REAR OPENING



## SPECIFICATIONS: STANDARD DIRECT / TELESCOPIC PASSENGER

TYPE	STANDARD DIRECT/TELESCOPIC FRONT OPENING ONLY / FRONT & REAR OPENING							
SERVICE	PASSENGER							
SPEED	80 FPM, 100 FPM, 125 FPM, 150 FPM							
CAPACITY	2000#		2500#		3000#		3500#	
CLEAR CAR SIZE Width X Depth	5'-8" X 4'-3"		6'-8" X 4'-3"		6'-8" X 4'-9"		6'-8" x 5'-5"	
OPENING	Front	F & R	Front	F & R	Front	F & R	Front	F & R
A	6'-0"	6'-0"	7'-0"	7'-0"	7'-0"	7'-0"	7'-0"	7'-0"
B	5'-0"	5'-6"	5'-0"	5'-6"	5'-6"	6'-0"	6'-2"	6'-8"
C	3'-0"	3'-0"	3'-6"	3'-6"	3'-6"	3'-6"	3'-6"	3'-6"
D	5'-9"	6'-6 1/2"	5'-9"	6'-6 1/2"	6'-3"	7'-0 1/2"	6'-11"	7'-8 1/2"
E	7'-4"	7'-4"	8'-4"	8'-4"	8'-4"	8'-4"	8'-4"	8'-4"
PIT	4'-0" STANDARD							
OVERHEAD	Speed dependant, consult Leistrizt engineering with questions.							
MACHINE ROOM	7'-0" X 5'-0" X 7'-6" Machine room may vary. Consult Leistrizt engineering with questions.							
ENTRANCE TYPES	SINGLE SLIDE (LEFT OR RIGHT) CENTER OPENING (not available for 2000 lb Capacity)							
TRAVEL	MAXIMUM 98'-0"							
HOLE DEPTH MIN.	DIRECT ACTING : TRAVEL + 1 FOOT TELESCOPIC 2 STAGES : TRAVEL/2 + 2 FEET TELESCOPIC 3 STAGES : TRAVEL/3 + 3 FEET							

# Leistrizt

Leistrizt Corporation, 165 Chestnut Street, Allendale, NJ 07401  
(201) 934-8262 • Fax: (201) 934-8266 • [www.leistriztcorp.com/elevators](http://www.leistriztcorp.com/elevators)